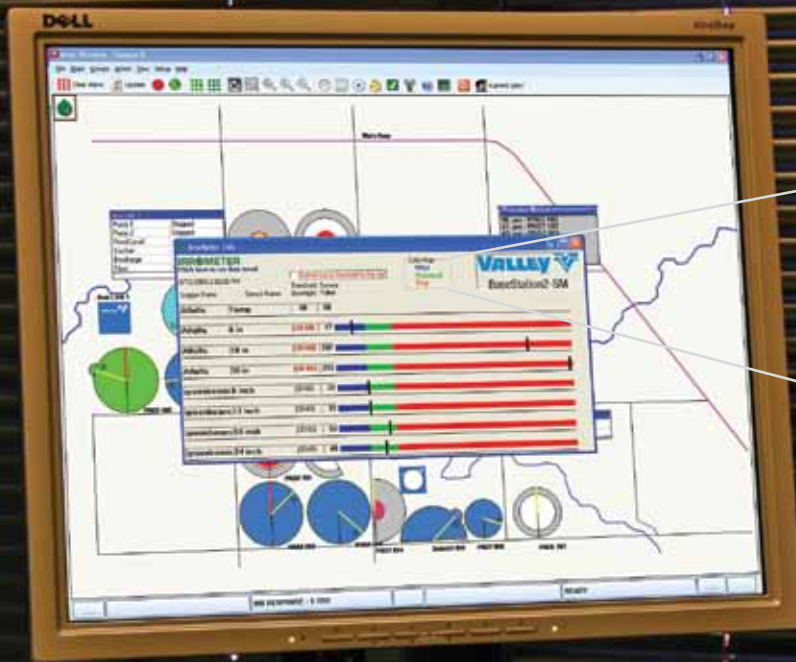


# New! BaseStation2-SM

## Soil Moisture Monitoring Now Available



### Color Map

Wet  
Normal  
Dry

RELIABLE  
DRIVE TRAINS

DURABLE  
STRUCTURES

PRECISE  
APPLICATIONS

ADVANCED  
TECHNOLOGIES

RESPONSIVE  
DEALERS

## All Inclusive Remote Management - Save Water, Time, and Labor.

Reliable remote irrigation management from Valley, combines the ability to monitor soil moisture status with remote monitoring/control of center pivot and linear irrigation equipment with the introduction of BaseStation2-SM, creating the premier management tool.

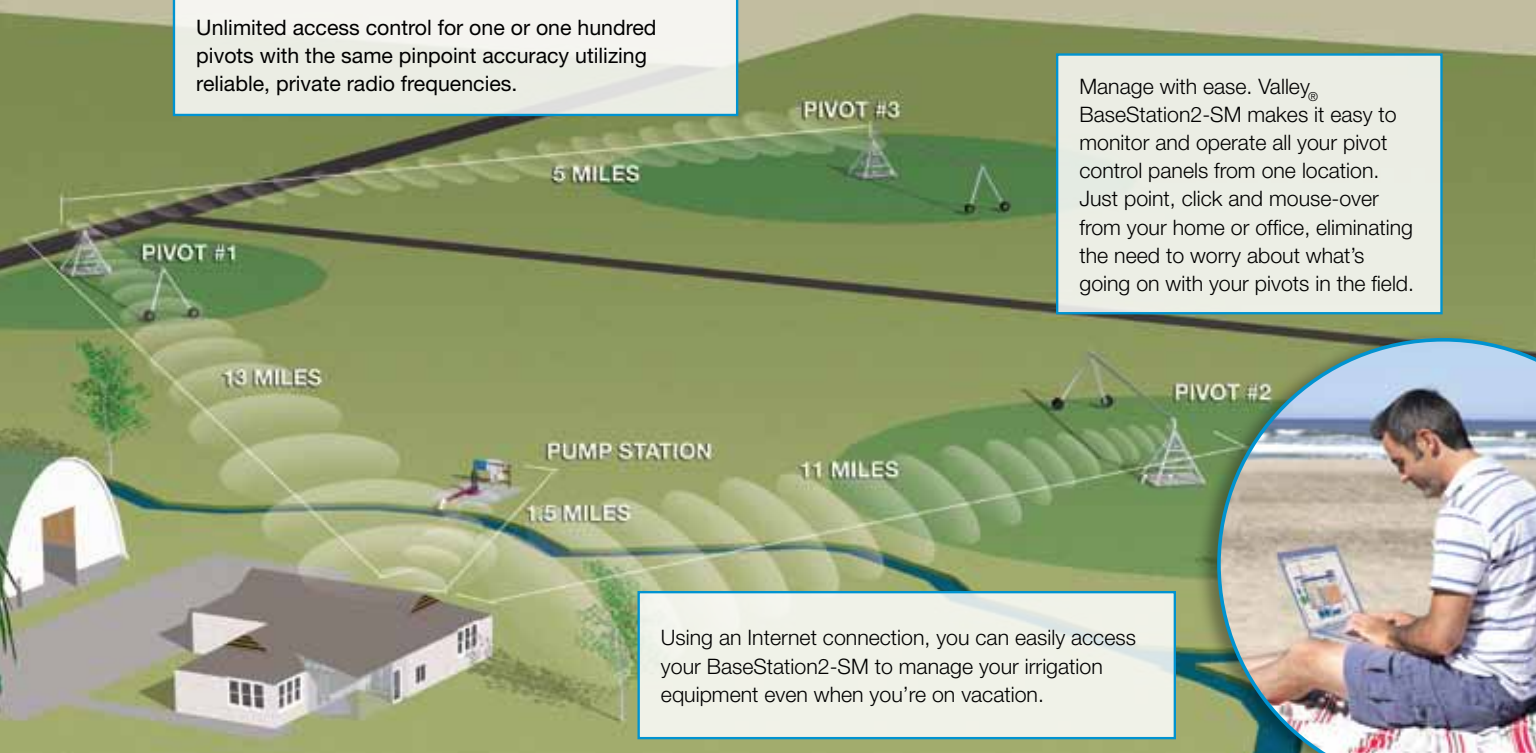
### Individually engineered from Valley

- Reliable, private radio telemetry offers real time data
- Soil moisture data received from Watermark® soil moisture sensors
- Receive alarm messages by cell phone, text message, or email
- Control pivots, check status, monitor and control pumps, valves and other devices
- Generate reports to support your farm management
- PanelLink™ integrates non-Valley control panels and non-computerized Valley control panels

## Real Time Updates for Reliable Management

Unlimited access control for one or one hundred pivots with the same pinpoint accuracy utilizing reliable, private radio frequencies.

Manage with ease. Valley® BaseStation2-SM makes it easy to monitor and operate all your pivot control panels from one location. Just point, click and mouse-over from your home or office, eliminating the need to worry about what's going on with your pivots in the field.



Using an Internet connection, you can easily access your BaseStation2-SM to manage your irrigation equipment even when you're on vacation.

Utilizing a central computer, an irrigator can follow the status of each center pivot or linear machine and control its operation based on soil moisture data received from Watermark sensors from IRROMETER®. Unlike other products on the market that require the user to switch back and forth between two or more software programs, the BaseStation2-SM software allows the monitoring and control of the equipment along with soil moisture sensing information. One glance at the main status screen can provide the user with quick notification if any field is approaching a cautionary status range for soil moisture.

The integration of the soil moisture monitoring into the BaseStation2-SM product now means the manager can more quickly and confidently make the necessary water management decisions for their farming operation.



Detailed moisture status trends and data are also easily accessed.



Conserving Resources. Improving Life.

7002 North 288<sup>th</sup> Street  
 Valley, Nebraska 68064-0358 USA  
 Phone: 402-359-2201 (Ext. 3415)  
 Fax: 402-359-4429  
 E-mail: [irrigation@valmont.com](mailto:irrigation@valmont.com)

International Fax: 402-359-4948  
 E-mail: [vintl@valmont.com](mailto:vintl@valmont.com)

[www.valleyirrigation.com](http://www.valleyirrigation.com)

See your local authorized Valley Dealer for complete details.

Valmont® Irrigation has a policy of continuous product improvement and development. As a result, certain changes in standard equipment, options, price, etc. may have occurred after the publication of this brochure. Some photographs and specifications may not be identical to current production. Your local Valley® dealer is your best source for up-to-date information. Valmont Irrigation reserves the right to change product design and specifications at any time without incurring obligations.

©2009 Valmont Industries, Inc., Valley, NE 68064 USA. All rights reserved.